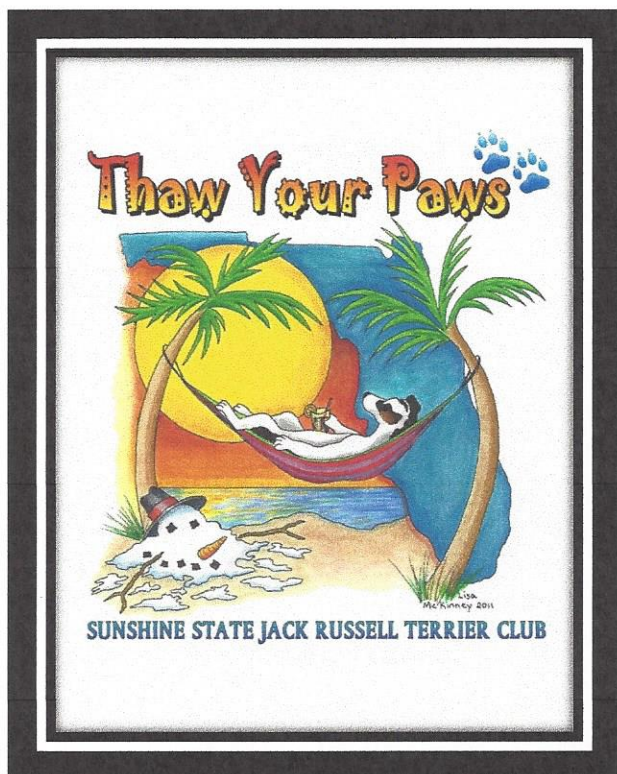


SUNSHINE STATE JACK RUSSELL TERRIER CLUB INVITES YOU TO

THAW YOUR PAWS TRIALS I & II

JANUARY 18, 2020

JANUARY 19, 2020



Black Prong Equestrian Center

450 SE CR 337

Bronson, FL 32621

Entries:

Judy Tyno

4160 Sapps Lake Rd.

Enigma, GA 31749

229-326-6288

96piccadillyjrt@gmail.com

Saturday

Conformation – Martha Milligan

GTG / Super Earth – Chet Atkins

Racing – Juston Thompson

Trailing & Locating – Juston Thompson

Brush Hunt, Lure Coursing and Thunder Tunnel

Sunday

Conformation – Ursula Schwalbe

GTG / Super Earth – Marina Sauer

Racing – Juston Thompson

Trailing & Locating – Juston Thompson

-NEW- HIGH POINT AND RESERVE ADULT TERRIER AWARD FOR THE WEEKEND

Trials chaired by committee:

Wayne Rees, Jackie Raes, Justin Caynor, Donna Tucker, Dianna Johnson,

Lisa McKinney, Sara Jo McLemore, Evelyn Segner,

Emily Sherfey, & Debbie Smith

Other Contact Dianna- 904-349-1965

Sanctioned by the Jack Russell Terrier Club of America, Inc.

Exhibitors and owners of terriers entered in sanctioned events must be current JRTCA members.

Agenda

All times are estimated and approximate

Saturday & Sunday

<u>Registration Booth Opens</u>	<u>8:00 am to 12:00 pm</u>
<u>(conformation closes at noon)</u>	
<u>Racing</u>	<u>8:30 am til finished</u>
<u>Go-to-ground/Super Earth</u>	<u>10:00 am to 3:00 pm</u>
<u>Conformation</u>	<u>after racing</u>
<u>Child & Youth Handler Classes</u>	<u>at beginning of conformation</u>
<u>Non-Sanctioned Events (D-H)</u>	<u>1:00 pm to 3:00 pm</u>
<u>(Includes Brush Hunt, Lure & Thunder Tunnel)</u>	

SATURDAY ONLY

<u>RAFFLE-</u>	<u>AFTER ALL EVENTS ARE COMPLETED & RIBBONS AWARDED</u>
<u>POTLUCK-</u>	<u>AFTER RAFFLE. PLEASE BRING A SHARING DISH.</u>

Important Notices for Exhibitors

- Please be responsible and pick up and clean up after your terriers.
- No post entries for racing except to fill heats.
- Post entries for other divisions will be accepted at the registration booth until 1PM
- Move-ups in GTG, after registration booth closes, will be taken by the GTG steward for the \$12.00 pre-entry price.
- No open checks.
- Class conflicts may occur. Please schedule carefully. No refunds for missed classes. Refunds for classes will be given only in cases of accident or illness to a terrier or owner, and for bitches in heat.
- Dogs must always be leashed or crated .
- NO puppies under 3 months of age permitted on the trial grounds.
- NO puppy sales are permitted at the trial site.
- Un-sportsman-like conduct will not be tolerated at any time during the trial. Anyone demonstrating poor sportsmanship will be dismissed from the trial and grounds.
- A copy of your JRTCA Membership Card Must Be Presented. If you have not received your new card, please sign the Membership sheet at the registration booth.
- Trials are held RAIN or SHINE!
- Ringside parking is reserved for Paid Sponsors Only.

SSJRTC HIGH POINT AND RESERVE ADULT TERRIER AWARD OVERALL FOR THE WEEKEND

(NON-SANCTIONED)

In the event of a tie, it will be broken by GTG times.

There will be an **ADULT** terrier high point and reserve awarded for the most **TOTAL** points of the weekend for the following categories:

FLAT RACING, HURDLE RACING, CONFORMATION= ONE CLASS, TERRIER'S HIGHEST PLACEMENT, GO-TO-GROUND, SUPER EARTH, TRAILING & LOCATING, BRUSH HUNT, LURE COURSING, AND THUNDER TUNNEL.

Please let the registration person know the morning of the trial when you pick up your packet, If your terrier will be competing in this event and you will receive a form to track your points. Terriers entered in 5 or more classes, from above, will automatically be entered in the high point Challenge. Good luck to all.

1st= 8 pts, 2nd= 6 pts, 3rd= 5 pts, 4th= 4 pts, 5th= 3 pts, 6th- 2 pts, Participation= 1pt.



RAFFLE

JOIN THE FUN!

Our raffles are famous for the quality and variety of items donated. The raffle tickets are drawn immediately after the last awards are presented on Saturday afternoon. 3 Tickets given for donated items.

Please donate raffle items for the raffle (does not need to be terrier item) to help the Sunshine State Jack Russell Terrier Club continue to put on these great trials. Join in the Fun of the drawing and take home something you have always wanted.

Emergency Vet:

Town & Country Animal Hospital
5204 NW Highway 27
Ocala, FL
(352) 274-9718 – Daytime hours

Pet Emergency Treatment Services
3200 SW 27th Avenue
Ocala, FL
(352) 512-0886 – Anytime

Directions to Black Prong Equestrian Center, Bronson, FL-

From South I-75, take exit #354. Go NW on Hwy 27 for 11.1 miles to CR 325. Turn left and follow for 6.4 miles, then left on SW 32nd Place (.4 mi.) Turn right on US 41 N (.3 mi.) Turn left on CR 326/SE 30th Street for 8.7 mi. Turn right onto SE CR 337. Site is on the left about 2.3 miles. Look for signs.

From North I-75, take exit #382, SR 121 S towards Williston. Follow for 15.9 miles. Slight right onto N Main St. (.4mi.) Turn right onto W Noble Avenue (.5 mi.). Turn left onto US 41 (McDonalds on corner) (.8 mi.) Turn right onto FL 121 S for 5.6 miles. Turn right onto E. Levy Street for 5.1 miles. Turn left onto CR 337 for .7 miles. Site will be on the right. Look for signs.

Area Accomodations-

Be sure to ask about hotel's pet policy before bringing your terriers in the room. Please keep your terriers crated and do not leave them unattended. Rates vary. Please clean up and pick up after your terriers at the hotels.

Motel 6	Hwy 27, Ocala, FL	352-732-3131
Tropical Inn	Hwy 27, Ocala, FL	352-732-2510
Budget Host	Hwy 27, Ocala, FL	352-732-6940
Quality Inn	Hwy 40, Ocala, FL	352-629-0381
Days Inn	Hwy 27, Ocala, FL	352-629-7041
Howard Johnson Inn	Hwy 27, Ocala, FL	352-629-7021

<u>On site camping – self-contained without hookups</u>	<u>per night</u>	<u>\$20.00</u>
<u>Full Hookup, sewer, water, electric</u>	<u>per night</u>	<u>\$40.00-Line</u>
		<u>\$50.00-Prime</u>
<u>Electric/Water only</u>	<u>per night</u>	<u>\$35.00-Line</u>
		<u>\$45.00-Prime</u>

**PLEASE PAY RV CAMPING FEES WITH YOUR ENTRIES- DO NOT CALL
BLACK PRONG DIRECTLY!**

**NOTE--CABINS are available at the trial site. Please contact
Black Prong directly ASAP to reserve your space. 352-486-1234.**

WELCOME JUDGES!

Conformation-Martha Milligan

Conformation-Ursula Schwalbe

G-T-G- Chet Atkins

S E- Marina Sauer

Racing- Juston Thompson

Please join us for the Potluck Dinner on site. Bring a dish to share.

The Sunshine State Jack Russell Terrier Club wishes all our judges a warm and sunny welcome. Thank you for taking time from your busy schedules to share your knowledge and expertise with our members and guests. We hope your visit with us is a pleasant and memorable one.

*From the Members, Officers and Board of Directors of the
Sunshine State Jack Russell Terrier Club.*

GREAT NEW LOCATION FOR 2020 SUNSHINE SHOWDOWN TRIALS



MARK YOUR CALENDAR FOR **SUNSHINE SHOWDOWN- MARCH 28 & 29, 2020**

ST. JOHN'S FAIRGROUNDS

5840 State Road 207, Elkton, FL

Less than 10 miles from I-95 S. - Approx. 78 miles from I-75/I-10 exchange

ON SITE RV HOOK UPS & CAMPING~~~~~NUMEROUS HOTELS AND RESTAURANTS

FLORIDA BEACHES TO VISIT

11.2 MILES TO FLORIDA'S OLDEST CITY- ST. AUGUSTINE

www.mapquest.com/us/florida/st-johns-county-fairgrounds



GENERAL RULES FOR EXHIBITORS

RULES FOR EACH EVENT WILL BE POSTED AT THAT EVENT

1. ALL SANCTIONED CLASSES ARE OPEN TO JACK RUSSELL TERRIERS ONLY.
2. EXHIBITORS AND OWNERS OF TERRIERS ENTERED MUST BE CURRENT JRTCA MEMBERS AND NOT BE A MEMBER OF A CONFLICTING JRT ORGANIZATION OR REGISTER THEIR JRTS IN ANY ALL-BREED REGISTRY. IF AN EXHIBITOR IS FOUND TO BE IN VIOLATION OF THIS POLICY, ENTRY WILL BE DISQUALIFIED AND NO REFUNDS WILL BE GIVEN. IF A VIOLATION IS CONFIRMED AFTER THE TRIAL, PLACEMENTS WILL BE VOIDED FROM ALL JRTCA RECORDS. EXHIBITORS MUST SUBMIT A COMPLETED ENTRY FORM INCLUDING A SIGNED WAIVER FOR EVERY TRIAL THEY ENTER.
3. ENTRIES MUST BE WITHIN THE 10 - 15" JRTCA HEIGHT STANDARD (WITH THE EXCEPTION OF PUPS WHO HAVE NOT YET MET THE 10" HEIGHT STANDARD); MEASURING DEVICES WILL BE AVAILABLE ON THE TRIAL GROUNDS.
4. PUPPIES (UNDER 12 MONTHS) ARE NOT ELIGIBLE FOR A CHAMPIONSHIP IN ANY DIVISION BUT THEIR OWN. PUPPIES ARE ELIGIBLE TO COMPETE ONLY IF THEY HAVE REACHED THEIR FOUR-MONTH BIRTHDAY (NOT 16 WEEKS). A PUPPY'S AGE IS THE ACTUAL AGE THE PUP IS ON THE DAY OF THE TRIAL.
5. BITCHES IN SEASON MAY NOT COMPETE IN ANY DIVISION. PRE-ENTRY FEES OF BITCHES IN SEASON WILL BE REFUNDED WITH A VETERINARIAN CERTIFICATE, OR AS OTHERWISE AGREED UPON BY THE TRIAL CHAIRPERSON.
6. SPAYED OR NEUTERED TERRIERS MAY COMPETE IN MISCELLANEOUS CONFORMATION. THEY MAY NOT COMPETE IN PUPPY, FAMILY, OPEN OR WORKING CONFORMATION. *NOTE: FOR FAMILY CLASSES; BROOD BITCHES & STUD DOGS ENTERED MAY NOT BE SPAYED/NEUTERED. THE OFFSPRING AT THEIR SIDES MAY BE INTACT OR SPAYED/NEUTERED.
7. A TERRIER BRED BY A SANCTIONED JRTCA JUDGE MAY NOT BE SHOWN UNDER THAT JUDGE IN THE CONFORMATION DIVISION.
8. TERRIERS OWNED OR CO-OWNED BY THE TRIAL CHAIRPERSON, OR ANY MEMBER OF THEIR HOUSEHOLD, MAY NOT BE ENTERED IN ANY PHASE OF THE COMPETITION, WITH THE EXCEPTION OF CHILD AND YOUTH HANDLING CLASSES.
9. TERRIERS OWNED BY JUDGES MAY NOT BE ENTERED IN THE DIVISION IN WHICH THEY ARE JUDGING; BUT MAY ENTER THE COMPETITION IN ANY OTHER DIVISION.
10. TERRIERS OWNED BY STEWARDS MAY BE ENTERED IN ANY DIVISION PROVIDED THAT THEY FIND A SUBSTITUTE TO PERFORM THEIR DUTIES OR HAVE SOMEONE ELSE SHOW THEIR TERRIERS.
11. REQUESTS FOR THE MEASUREMENT OF A TERRIER ENTERED IN ANY CLASS NUMBER MAY BE MADE ONLY BY ANOTHER EXHIBITOR IN THAT SAME CLASS NUMBER OR BY THE JUDGE EXCEPT IN RACING. REQUESTS FOR THE MEASUREMENT OF A TERRIER IN RACING MAY BE MADE BY THE JUDGE OR BY AN EXHIBITOR WITH A TERRIER ENTERED IN THE SAME CLASS NUMBER OR, IF CLASSES ARE SPLIT BY GENDER, MAY CALL FOR THE MEASUREMENT OF A TERRIER IN THE SAME AGE AND HEIGHT CATEGORY. (EXAMPLE: THE OWNER OF AN UNDER ADULT DOG ENTERED IN RACING MAY CALL FOR THE MEASUREMENT OF AN UNDER ADULT BITCH AS THE POTENTIAL EXISTS FOR THEM TO RACE EACH OTHER IN THE CHAMPIONSHIP RACES.) EXHIBITORS RACING PUPPIES MAY CALL FOR MEASUREMENT OF A PUPPY IN A DIFFERENT AGE CATEGORY AS LONG AS IT IS IN THE SAME HEIGHT CATEGORY. THE PERSON MAKING THE REQUEST FOR MEASUREMENT MUST NAME THE TERRIER OR TERRIERS THEY WISH TO HAVE MEASURED, BUT REQUESTS FOR MEASUREMENT OF ENTIRE CLASSES WILL NOT BE HONORED. THE MEASUREMENT OF THE TERRIER WILL BE CONSIDERED THE TERRIER'S OFFICIAL HEIGHT FOR THE DURATION OF THE TRIAL. ONLY JRTCA HEIGHT CARDS ISSUED AFTER SEPTEMBER 1999 WILL BE HONORED.
12. EXCESSIVE USE OF SQUEAKY OR FUR-LIKE BAITING DEVICES BY EXHIBITORS IS PROHIBITED AND MAY RESULT IN THE EXHIBITOR BEING EXCUSED FROM THE CLASS. "EXCESSIVE USE" WILL BE AT THE JUDGE'S DISCRETION.
13. EXHIBITORS PARTICIPATING IN THE JRTCA WORKING TERRIER CLASSES OR CERTIFICATE GO-TO-GROUND & SUPER EARTH MUST SUBMIT THE APPROPRIATE JRTCA CERTIFICATES WITH PRE-ENTRIES OR AT THE TIME OF POST-ENTRY. THE JUDGE MAY REQUIRE A COPY OF THE CERTIFICATE BE PRESENTED TO THE RING/DEN STEWARD AT TIME OF JUDGING. REGISTERED TERRIERS MAY SUBMIT A COPY OF NHC APPLICATION SIGNED BY A JRTCA WORKING JUDGE WITHIN 30 DAYS OF THE DATE IT WAS ISSUED.
14. PUPPIES UNDER THE AGE OF THREE MONTHS ARE NOT PERMITTED ON THE TRIAL GROUNDS. ANY PERSON VIOLATING THIS RULE WILL BE EXCUSED FROM ALL CLASSES ENTERED AND ASKED TO LEAVE THE TRIAL SITE.
15. ALL DOGS MUST BE LEASHED OR CRATED EXCEPT WHEN COMPETITION REQUIRES OFF-LEASH WORK. NO LIBERTY LEASHES ALLOWED.
16. OVERLY AGGRESSIVE DOGS, OR AN OWNER'S FAILURE TO CONTROL THEIR DOG, MAY RESULT IN DISQUALIFICATION AT THE DISCRETION OF THE JUDGES OR THE TRIAL CHAIRPERSON.
17. THE ABUSE OF DOGS OR SEVERE DISCIPLINING OF DOGS ON THE TRIAL GROUNDS IS PROHIBITED.
18. DOGS OTHER THAN JRTS ON THE GROUNDS MAY BE EXCLUDED OR PERMITTED AT THE DISCRETION OF THE TRIAL CHAIRPERSON. IF OTHER BREEDS ARE ALLOWED, THEY MUST BE LEASHED OR CONTAINED AT ALL TIMES.
19. EXHIBITORS ARE RESPONSIBLE TO DOUBLE CHECK THE CLASSES THEY HAVE ENTERED AND BE ON TIME. NO REFUNDS WILL BE GIVEN FOR MISSED CLASSES.

20. THE OWNER/HANDLER OF A TERRIER ENTERING ANY CLASS DOES SO AT HIS/HER OWN RISK AND AGREES TO ABIDE BY THE RULES OF THE JRTCA AND THE TRIAL. A COPY OF THE JRTCA RULE BOOK CAN BE OBTAINED BY CONTACTING THE JRTCA OFFICE (410-561-3655) OR IT CAN BE DOWNLOADED FROM THE JRTCA WEBSITE (WWW.THEREALJACKRUSSELL.COM).

21. UNSPORTSMANLIKE CONDUCT WILL NOT BE TOLERATED. ANYONE DEMONSTRATING SUCH BEHAVIOR WILL BE ASKED TO LEAVE THE TRIAL SITE AND NO ENTRY FEES WILL BE REFUNDED.

22. ALL DOGS BROUGHT TO JRTCA SANCTIONED TRIALS MUST BE CURRENT ON VACCINATIONS. NO DOGS OF ANY AGE MAY BE BROUGHT TO A TRIAL WHO HAVE SUSPICION OF CONTAGIOUS OR INFECTIOUS DISEASE.

23. THE JUDGE'S DECISION CONCERNING PLACEMENTS ARE FINAL IN ALL DIVISIONS.

DIVISION A. RACING - No Post Entries unless to fill heats.

- All terriers including 4 up to 6 months puppies, must be muzzled.
- Basket Muzzles preferred. No open-ended muzzles. No bright colored muzzles. Collars should be off when on deck.
- All terriers entering the catch area during a race without a secured muzzle will be disqualified.
- No request for height measurement once racing has begun. Measurements by 7:45 AM
- Shorties: Adult terriers one year and older, under 10", not registered or recorded. May not cross-enter any sanctioned racing classes.
- Terriers May Not cross-enter between Adult, Veteran & Senior classes.
- DOG TAXI -Your dogs will be transported by way of a golf cart with six crates from the catch area back to the start area. **You may opt out of this service by telling the START area stewards.**

Section I. Flat Races

Class 1: Pups, 4 up to 6 months (non-sanctioned)

Class 2: Pups, 6 up to 9 months, up to 12½"

Class 3: Pups, 6 up to 9 months, over 12½ up to 15"

Class 4: Pups, 9 up to 12 months, up to 12½"

Class 5: Pups, 9 up to 12 months, over 12½ up to 15"

Class 6: Shorties, 1 year & older. Under 10". (non-sanctioned)

Class 7: Senior Dogs, 9 years and over, 10 up to 12½"

Class 8: Senior Dogs, 9 years and over, over 12½ up to 15"

Class 9: Senior Bitches, 9 years and over, 10 up to 12½"

Class 10: Senior Bitches, 9 years and over, over 12½ up to 15"

Class 11: Dogs, 1 year and over, 10 up to 12½"

Class 12: Dogs, 1 year and over, over 12½ up to 15"

Class 13: Bitches, 1 year and over, 10 up to 12½"

Class 14: Bitches, 1 year and over, over 12½ up to 15"

Class 15: Veteran Dogs, 6 years and over, 10 up to 12½"

Class 16: Veteran Dogs, 6 years and over, 12½" up to 15"

Class 17: Veteran Bitches, 6 years and over, 10 up to 12½"

Class 18: Veteran Bitches, 6 years and over, over 12½ up to 15"

Section 2. Steeplechase Races (Over low hurdles - up to 8")

Class 19: Pups, 4 up to 6 months (non-sanctioned)

Class 20: Pups, 6 up to 9 months, up to 12½"

Class 21: Pups, 6 up to 9 months, over 12½ up to 15"

Class 22: Pups, 9 up to 12 months, up to 12½"

Class 23: Pups, 9 up to 12 months, over 12½ up to 15"

Class 24: Shorties, 1 year & older. Under 10". (non-sanctioned)

Class 25: Senior Dogs, 9 years and over, 10 up to 12½"

Class 26: Senior Dogs, 9 years and over, over 12½ up to 15"

Class 27: Senior Bitches, 9 years and over, 10 up to 12½"

Class 28: Senior Bitches, 9 years and over, over 12½ up to 15"

Class 29: **10-12½" Puppy Championship.** Open to 1st place winners of classes 2, 4, 20 & 22 . No entry fee.

Class 30: **Over 12½-15" Puppy Championship.** Open to 1st place winners of classes 3, 5, 21 & 23. No entry fee.

Class 31: **Shortie Championship.** (non-sanctioned). Open to 1st place winners of classes 6 & 24. No entry fee.

Class 32: **10-12½" Senior Championship.** Open to 1st place winners of classes 7, 9, 25, & 27. No entry fee.

Class 33: **Over 12½-15" Senior Championship.** Open to 1st place winners of classes 8, 10, 26 & 28. No entry fee.

Class 34: Dogs, 1 year and over, 10 up to 12½"

Class 35: Dogs, 1 year and over, over 12½ up to 15"

Class 36: Bitches, 1 year and over, 10 up to 12½"

Class 37: Bitches, 1 year and over, over 12½ up to 15"

Class 38: Veteran Dogs, 6 years and over, 10 up to 12½"

Class 39: Veteran Dogs, 6 years and over, over 12½ up to 15"

Class 40: Veteran Bitches, 6 years and over, 10 up to 12½"

Class 41: Veteran Bitches, 6 years and over, over 12½ up to 15"

Class 42: **10-12½" Adult Championship.** Open to 1st place winners of classes 11, 13, 34 & 36. No entry fee.

Class 43: **Over 12½-15" Adult Championship.** Open to 1st place winners of classes 12, 14, 35, & 37. No entry fee.

Class 44: **10-12½" Veteran Championship.** Open to 1st place winners of classes 15, 17, 38 & 40. No entry fee.

Class 45: **Over 12½-15" Veteran Championship.** Open to 1st place winners of classes 16, 18, 39, & 41. No entry fee.



2019 Youth Handler of the year will be presented on Saturday at this trial in the Conformation Ring.

Please- take a moment to encourage the youth of our club. They are our future.

DIVISION B: CONFORMATION

Section I: YOUTH

- Child Handlers 5-9 years of age. They must handle a six month or older Jack Russell terrier.
- Youth Handlers: 10-16 years of age. The youth handler must handle the same adult terrier in all Youth Division classes entered. No puppies please. See rules for exceptions regarding injured terrier.
- Child/Youth exhibitor's age is determined as of January 1st of the current calendar year; except for those children turning 5 years of age. They may start competing in Child Handler any time of the year following their 5th birthday.
- Child/Youth entries must be JRTCA members either under a family membership or under an individual Youth membership.
- Entry fee is \$5.00 a class. Please list class number, child/youth's name, birthday, and dog's name on entry form.
- Quality of the dog is NOT to be considered.
- Points are: 1st=8 pts., 2nd=6 pts., 3rd=5 pts., 4th= 4 pts., 5th=3 pts., 6th= 2 pts., & Participation=1 pt.

Class 46: Child Handler. Open to any youth aged 5 through 9 handling a JRT, six months of age or older. Judged on child's knowledge of the JR and ability to present his/her dog. Quality of the dog NOT to be considered.

Class 47: Youth Handler. Open to any youth aged 10-16 handling an adult Jack Russell Terrier. Judged on youth's knowledge of the JRT and ability to present his/her dog. Quality of dog NOT to be considered.

Class 48: Youth GTG. Open to any youth aged 10-16, handling an adult Jack Russell Terrier. Judged on youth's ability to present his or her dog and knowledge of GTG. To be run through the 10-ft. novice liner; time not to be considered.

Class 49: **Youth High Score and Reserve** will be awarded to the Youth Handlers with the most points in Classes 47 thru 48.

CONFORMATION

- Cross entering is not permitted within or between the Open and Working Sections.
- Exhibitors participating in the working Classes must submit the appropriate JRTCA Paperwork with entries. The judge may require a copy of The National Hunting Certificate to be presented to the ring steward at the time of judging.
- Registered terriers may submit a copy of the NHC Application, signed by a JRTCA Working Judge, within 30 days of the date it was issued.
- Spayed or neutered terriers may only compete in Miscellaneous Conformation classes.

Section II. 4-6 Mo. PUPS & (3 up to 4 mos. Pups)

Class 50: Pups, 3 up to 4 months (non-sanctioned)

Class 51: Dog pups, 4 up to 6 months

Class 52: Bitch pups, 4 up to 6 months

Class 53: **BEST 4-6 MONTH PUPPY & RESERVE**. Open to Best & Reserve of classes & 51 and 52.

Section III. 6-12 Month PUPS

Class 54: Dog pups, 6 up to 9 months

Class 55: Dog pups, 9 up to 12 months

Class 56: **BEST DOG PUP & RESERVE.** Open to 1st and 2nd place winners of classes 54 and 55; no entry fee.

Class 57: Bitch pups, 6 up to 9 months

Class 58: Bitch pups, 9 up to 12 months

Class 59: **BEST BITCH PUP & RESERVE.** Open to 1st & 2nd place winners of classes 57 & 58; no entry fee.

Class 60: **PUPPY CONFORMATION CHAMPION & RESERVE.** Open to Best Puppy Dog & Reserve and Best Puppy Bitch & Reserve from winners of classes 56 and 59; no entry fee.

Section IV. Family

Class 61: Family Class. Open to dam or sire with at least two, but no more than three offspring at parent's side. Judged on Breed Standard and consistency of type. Stud Dog & Brood Bitch must be intact. Offspring may be intact or Spayed/Neutered,

Section V. Miscellaneous.

Open to any adult JRT including those spayed and neutered. Judged on breed standard unless otherwise noted.

Class 62: Spayed/Neutered Working Terrier. Open to any JRTCA registered terrier owned by a JRTCA member, which holds a JRTCA Natural Hunting Certificate.

Class 63: Neutered Dog/ Spayed Bitch. Judged on the breed standard and condition of the terrier.

Class 64: Man's Best Friend. (Non-Sanctioned) Open to any Jack Russell Terrier. Judged on companionship, cuteness, personality, obedience and tricks. Not to be judged on breed standard.

Class 65: Veteran Dog & Bitch. Open to any JRT 6 yrs. and older. Judged on the breed standard and the condition of the terrier.

Class 66: Senior Dog & Bitch. Open to any JRT 9 yrs. and older. Judged on the breed standard and the condition of the terrier.

Class 67 **BEST VETERAN/SENIOR TERRIER & RESERVE.** Open to 1st & 2nd place winners of classes 65 & 66; no entry fee.

Section VI. Suitability/Judge's Choice. Open to any adult JRT, including those which have been spayed or neutered. The dog the judge would choose to take hunting to each quarry listed below. Prizes to first place.

Class 68: Suitability to Red Fox

Class 69: Suitability to Groundhog

Class 70: Suitability to Raccoon.

Section VII. JRTCA Working Terriers. Open to any JRTCA registered terrier owned by a JRTCA member which holds a JRTCA NHC. Terriers entering this section may not cross enter in Open; no cross-entering is permitted within the Working section.

Class 71: Bronze Medallion Dog. Open to any dog which has earned the JRTCA Bronze Medallion for Special Merit in the Field.

Class 72: Working Terrier Dog, 1 year & over, 10 up to 12½"

Class 73: Working Terrier Dog, 1 year & over, over 12½" up to 15"

Class 74: Veteran Working Terrier Dog, 6 years and over.

Class 75: **BEST JRTCA WORKING TERRIER DOG & RESERVE.** Open to first & second place winners of classes 71 through 74 ; no entry fee.

Class 76: Bronze Medallion Bitch. Open to any bitch which has earned the JRTCA Bronze Medallion for Special Merit in the Field.

Class 77: Working Terrier Bitch, 1 year & over, 10 up to 12½"

Class 78: Working Terrier Bitch, 1 year & over, over 12½" up to 15"

Class 79: Veteran Working Terrier Bitch, 6 years and over.

Class 80: **BEST JRTCA WORKING TERRIER BITCH & RESERVE.** Open to first & second place winners of classes 76 through 79 ; no entry fee.

Class 81: **JRTCA WORKING TERRIER CONFORMATION CHAMPION & RESERVE.** Open to first & second place winners of classes 75 & 80.

Section VIII. Open Adult. No cross-entering is permitted within the Open Section. Cross-entering is not permitted between the Open Section and the Working Section.

Class 82: Bred by Exhibitor Dog. Open to any adult JR owned and bred by the exhibitor; must be handled by the breeder under whose kennel prefix the terrier is registered or a member of the breeder's immediate family.

Class 83: Dogs, 1 year & over, 10 up to 12½", smooth

Class 84: Dogs, 1 year & over, 10 up to 12½", rough/broken

Class 85: Dogs, 1 year & over, over 12½" up to 15", smooth

Class 86: Dogs, 1 year & over, over 12½" up to 15", rough/broken

Class 87: **BEST OPEN DOG & RESERVE.** Open to first & second place winners of classes 82 through 86.

Class 88: Bred by Exhibitor Bitch. Open to any adult JR owned and bred by the exhibitor; must be handled by the breeder under whose kennel prefix the terrier is registered or a member of the breeder's immediate family.

Class 89: Bitches, 1 year & over, 10 up to 12½", smooth

Class 90: Bitches, 1 year & over, 10 up to 12½", rough/broken

Class 91: Bitches, 1 year & over, over 12½" up to 15", smooth

Class 92: Bitches, 1 year & over, over 12½" up to 15", rough/broken

Class 93: **BEST OPEN BITCH & RESERVE.** Open to first & second place winners of classes 88 through 92.

Class 94: **BEST OPEN TERRIER & RESERVE.** Open to first & second place winners of classes 87 & 93.

DIVISION C—GO-TO-GROUND

- Schooling prior to the competition is not permitted. Any violation of this rule shall result in disqualification from the Go-To-Ground competition at this trial. See posted rules at event.
- ***FOR ALL CLASSES; work is defined as baying, digging, concentrated stare, whining or biting at the bars. A break in work is defined as ceasing to work for a period of more than ten seconds. Leaving the quarry is defined as moving back in the tunnel away from quarry and out of the view of the judge. The judge may halt the work, if the judge believes the terrier is injuring itself. Terrier is not to leave quarry once it is reached, for all classes.**
- Must work quarry continuously for one full minute, without a break in work, unless noted.
- No Adult terrier may compete in the Championship Certificate class until the Trial Certificate has been applied for and issued and received.
- Please be courteous; Let someone run between your dogs when you have more than one.
- Copies of JRTCA GTG trial certificate must be submitted with pre-entries or presented to the den steward at the time of judging in all championship classes.
- **Cross-entering is not permitted between open or certificate classes.**

Class 95: Pre-Novice Puppy. Open to pups 4 up to 6 mos. Entry in this class does not affect pup's eligibility to enter Novice class after 6 mos. of age. One min. to reach quarry; mark for 15 seconds without a break in work and without leaving quarry; may leave earth and re-enter until quarry is reached.

Class 96: Novice Puppy. Open to JRTs 6 up to 12 months which have **not** scored 100% in this class at a previous JRTCA trial. Entries earning a score of 100% at this trial **may**, upon payment of the entry fee, enter the Open Puppy class at this trial. One minute to reach quarry; may leave earth and re-enter several times until quarry is reached; must work quarry continuously for a full 30 seconds without a break in work and without leaving the quarry; may switch from one type of work to another.

Class 97: Open Puppy. Open to JRT's 6 up to 12 months which have scored 100% in a Novice Go-To-Ground class at this or a previous JRTCA trial. **Not open to any pup which has previously achieved 100% in this class.** Puppies earning a score of 100% at this trial **may**, upon payment of entry fee, enter the Puppy Championship class at this trial. 30 seconds to reach quarry; may leave earth once and re-enter before quarry is reached; must work quarry continuously for one full minute without a break in work and without leaving quarry; may switch from one type of work to another.

Class 98: **Puppy GTG Championship.** Open to JRT pups 6 up to 12 months, which have scored 100% on Open Puppy G-T-G at this or a previous JRTCA trial. A copy of the 100% score sheet must be submitted with a pre-entry or shown to den steward at the time of the class. Puppies may move up to this class on the same day as qualifying in Open G-T-G, upon payment of additional fee. 1st. and 2nd. Place winners will be Puppy G-T-G Champion and Reserve. 30 seconds to reach quarry; may leave earth once and re-enter before quarry is reached; when quarry is reached, must work quarry continuously for one full minute without a break in work and without leaving quarry; may switch from one type of work to another.

Class 99: Novice Adult. Open to JRTs one year or older which have not scored 100% in this class at a previous JRTCA trial. Entries earning a score of 100% at this trial may, upon payment of entry fee, enter the Open Adult class at this trial. One minute to reach quarry; may leave earth and re-enter several times until quarry is reached; must work quarry continuously for a full 30 seconds without a break in work and without leaving the quarry; may switch from one type of work to another.

Class 100: Open Adult. Open to adult JRTs which have scored 100% in a Novice Go-To-Ground class at this or a previous JRTCA trial. 30 seconds to reach quarry; may leave earth once and re-enter before quarry is reached; work quarry continuously for one full minute without a break in work and without leaving quarry; may switch from one type of work to another. No move ups from this class.

Class 101: Open Shortie. (Non-Sanctioned) Open to JRT's under 10". Not open to any dog which has previously achieved 100% in this class. Shorties earning a score of 100% at this trial may, upon payment of entry fee, enter the Shortie GTG Championship. 30 seconds to reach quarry; may leave earth once and re-enter before quarry is reached; work quarry continuously for one full minute without a break in work and without leaving quarry; may switch from one type of work to another.

Class 102: **Shortie GTG Championship** (Non-Sanctioned) Open to JRT's under 10". 30 seconds to reach quarry; may not leave earth; must work quarry continuously for one full minute without a break in work and without leaving quarry; may switch from one type of work to another.

GO-TO-GROUND CERTIFICATE CLASSES – NO CROSS ENTERING

Open to any adult Jack Russell 10 up to 12½" who holds a JRTCA Trial Certificate. Copy of certificate must be submitted with pre-entry or shown to Den Steward at time of class. First and second place winners will be GTG Champion & Reserve. 30 seconds to reach quarry; may not leave earth; work quarry for one full minute without a break in work and without leaving quarry.

Class 103: **10 up to 12½" Adult Championship Certificate**

Class 104: **Over 12½ up to 15" Adult Championship Certificate**

Class 105: **10 up to 12½" Veteran Championship Certificate**

Class 106: **Over 12½ up to 15" Veteran Championship Certificate**

Class 107: **10 up to 12½" Senior Championship Certificate.**

Class 108: **Over 12½ up to 15" Senior Championship Certificate.**

DIVISION D — SUPER EARTH. Challenging GTG course; open to any JRT 6 mos. or older. 30 seconds per 30 ft of tunnel to reach quarry; may leave earth and re-enter several times until the quarry is reached; then must work quarry for one minute a break in work and without leaving quarry. May switch from one type of work to another without penalty.

Copy of JRTCA trial certificate must be submitted with pre-entries or presented to the den steward at the time of judging; or be on file with Sunshine State JRTC.

Class 109: Open 6 up to 12 months Puppy Super Earth. Puppies earning a score of 100% at this trial may, upon payment of entry fee, enter the Puppy Championship class at this trial.

Class 110: Open Adult Super Earth. Open to terriers one year and older.

Class 111: Open Veteran Super Earth. Open to terriers six years and older.

Class 112: **6 up to 12 month Puppy Champion Super Earth.** Open to 6 up to 12 months JRT puppies which have earned 100% in an Open 6 up to 12 months Puppy Super Earth Class at this or a previous JRTCA Trial. A copy of a 100% score sheet must be presented with pre-entry or be shown to den steward at the time of the class. First and second place winners will be Puppy Super Earth Champion and Reserve.

SUPER EARTH CERTIFICATE CLASSES-- NO CROSS ENTERING

Open to Jack Russell Terriers, one year and older, which hold a JRTCA Super Earth Trial Certificate. A copy of the certificate must be submitted with pre-entry or be shown to the Den Steward at the time of the class. First and Second Place winners will be Adult Super Earth Champion and Reserve.

Class 113: **10 up to 12.5" Adult Certificate Super Earth.**

Class 114: **Over 12.5" up to 15" Adult Certificate Super Earth**

Class 115: **10 up to 12.5" Veteran Certificate Super Earth**

Class 116: **Over 12.5" up to 15" Veteran Certificate Super Earth**

Class 117: **10 up to 12.5" Senior Certificate Super Earth**

Class 118: **Over 12.5 up to 15" Senior Certificate Super Earth**

DIVISION E-- TRAILING AND LOCATING – Handler must remain at the starting area. No directional hand signals allowed. Verbal commands to praise or recall is allowed. No schooling is permitted in area prior to competition starting. The terrier is judged on its ability to follow a line in a simulated natural hunting environment, to locate and mark the quarry. The terrier is judged on a combination of time and accuracy. The terrier with the fastest time is not necessarily the winner. The starting point is a natural marked spot indicated by the judge. The end is a natural marked spot approx. 2-3 ft. from the actual quarry. "See posted rules for additional information."

Class 119: Puppies – 6 up to 12 months

Class 120: Adults Over 1 year of age

Class 121: Veterans - 6-9 years of age

Class 122: Seniors - Over 9 years of age

Class 123: **Trailing & Locating Champion and Reserve.** Awarded to the first and second fastest times and fewest penalties each day in classes 119 thru 122.

Division F. BRUSH HUNT (Non-Sanctioned) Can your terrier find the quarry? Time starts when the handler releases the terrier in the brush area. After one minute, handler may assist the terrier in locating the quarry. JUDGE determines when the terrier locates and/or works the quarry. High Score & Reserve award determined from the fastest times of the day from the combined classes below.

Class 124: Puppies – 6 up to 12 months

Class 125: Adults Over 1 year of age

Class 126 : Veterans - 6-9 years of age

Class 127: Seniors - Over 9 years of age

Class 128: **Brush Hunt Champion and Reserve.** Awarded to the first and second fastest times each day in classes 124 thru 127.

Division G. LURE COURSING (Non-Sanctioned) Your dog will be timed from release in a fenced course to chase the lure. Run in a circular fenced course. Open to any terriers up to 15". High Score & Reserve awarded for the fastest times of the day for each height division from the combined classes below.

Class 129: Puppies – 6 up to 12 months, 10 up to 12.5"

Class 130: Puppies – 6 up to 12 months, over 12.5" up to 15"

Class 131: Shorties - under 10"

Class 132: Adults - Over 1 year of age, 10 up to 12.5"

Class 133: Adults - Over 1 year of age, over 12.5" up to 15"

Class 134: Veterans – over 6 years of age, 10 up to 12.5"

Class 135: Veterans - over 6 years of age, over 12.5" up to 15"

Class 136: Seniors – over 9 years of age, 10 up to 12.5"

Class 137: Seniors - over 9 years of age, over 12.5" up to 15"

Class 138: Other Terriers - open to other terriers up to 12.5" (not eligible for Championship)

Class 139: Other Terriers – open to other terriers 12 " up to 15" (not eligible for Championship)

Class 140: **Under Lure Champion and Reserve.** No entry fee. Awarded to 1st & 2nd fastest time each day from classes 129, 131, 132, 134, 136.

Class 141: **Over Lure Champion and Reserve.** No entry fee. Awarded to 1st & 2nd fastest time each day from classes 130, 133, 135, 137.

Division H. Thunder Tunnel (Non-Sanctioned) A timed event/competition with the terrier working its way through an above ground tunnel. The tunnel has a clear front that allows you to see how your dog maneuvers the tunnel. The terrier runs the tunnel twice; the best time is the final time that counts towards placement. High Score & Reserve awarded for the fastest times of the day from the combined classes below.

Class 142: Puppies – 6 up to 12 months

Class 143: Adults - Over 1 year of age

Class 144: Veterans – over 6 years of age

Class 145: Seniors - over 9 years of age

Class 146: **Thunder Tunnel Champion and Reserve.** Awarded to the first and second fastest times each day in classes 142 thru 145.

Thank you to all exhibitors for attending and supporting Sunshine State Jack Russell Terrier Club.

Thank you to all the volunteers and helpers. We truly appreciate you!

**A food
vendor will
be onsite
for
Breakfast
and Lunch.**



LeAF- Levy Animal Friends 501 (c) (3) is our primary support group.

They assist with set up and tear down of all the club equipment.

They also provide catchers for racing and help run other events for us.

Please show your support by donating items for their rescue. Dog beds, food, bowls, towels, blankets, etc. Cash donations are also accepted.

LeAF is currently involved with helping build a NO KILL SHELTER in Williston and is still in need of funding. The folks working our trials are NOT getting paid but are working for their cause. If you can help, thank you so much!

www.ssjrhc.com

Like us and follow us on
FACEBOOK



Handwritten signature or mark.

CLASS SPONSORSHIP FORM

Please be a sponsor and support the Sunshine State Jack Russell Terrier Club.

All sponsors will be announced during the trial.

NAME: _____

KENNEL NAME _____

Division Sponsor \$50.

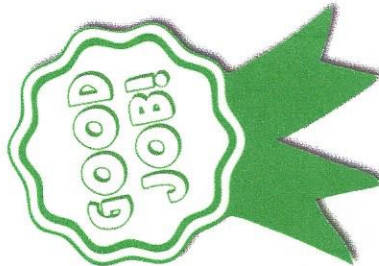
1st Choice _____ Day _____
2nd Choice _____ Day _____

Best/Championship Class \$20.

1st Choice _____ Day _____
2nd Choice _____ Day _____

Class Sponsor \$10.

1st Choice _____ Day _____
2nd Choice _____ Day _____



Please total your sponsorship and include it in the space provided on the entry form.

THANK YOU FOR YOUR SPONSORSHIP and SUPPORT OF THIS TRIAL.

Thaw Your Paws! ~~~~2020 SATURDAY

January 18, 2020 Sunshine State Jack Russell Terrier Club
Black Prong Equestrian Center, Bronson, FL 32621

Check # _____ Total \$ _____

SSJRTC Members Pre-Entry Fee: \$10.00 per class
Non-members Pre-Entry Fee \$12.00 per class
Post-Entry Fee: \$15.00 per class

Owners Name:

Address:

City: St: Zip:

Phone: _____

E-Mail: _____

NO POST-ENTRIES FOR RACING

JRTCA Administration Fee: \$2.00 per dog or pup

OR \$7.00 total per dog if not registered or recorded.

All Entries Post-Marked after Wednesday Jan. 8th, 2020.

may be considered post entries.

Payment must accompany entry forms

to obtain pre-entry rates. Post \$-day of trial applies.

Make Checks Payable to: SSJRTC

Send Completed Entry Form to: JUDY TYNO

4160 Sapps Lake Rd.
Enigma, GA 31749

229-326-6288

96piccadillyvrt@gmail.com

-enclose copy

JRTCA 2019/2020 Membership Number:

Remember to renew for 2020

**Include a Copy of 2020 JRTCA Membership Card
with your entries**

INCLUDE ALL TRIAL CERTIFICATES REQUIRED
Register or record your terrier to avoid \$5.00 fee

[illegible]

Total Entry Fees:

JRTCA Adm Fee \$2 per dog

OR Non-req/rec Fee \$7 per dog total

Conformation Parking (\$10/day)

Child/Youth Entry Fee:

Sponsorship: Class#

Membership

Signature _____

Date: _____

CAMPING? YES _____ NO _____

CAMPING? _____ YES

NO_____

Total Amount Enclosed

I hereby enter the above at my own risk, and I hereby engage to be responsible for any injury or damages that may occur to, or to be caused by, any animals, vehicles, or trappings or the loss of any animal, vehicles or trappings exhibited by me, and I further agree to be absolutely responsible for the physical condition of any animal under my control of ownership and will release, indemnify, and save harmless Black Prong Equestrian Center, and/or the SJRTC Club, or the JRTCA Inc from any damages, expenses, and or liability arising out of or resulting from any act of the Exhibitor or the SJRTC event or their agents or employees. I hereby certify that my dogs are free from contagious disease and that I am not a member of any conflicting JRT organization, nor do I register my Jack Russell Terriers with any conflicting JRT Club or all-breed registry.

Saturday's Child & Youth Division Entry Form

All Exhibitors must be current JRTCA Members

Child Handlers 5-9 years of age
Youth Handlers 10-16 years of age

A child/youth exhibitors age is determined as of January 1st Of the current year, except for those children turning 5 years Of age. They may start competing in Child Handler any time Of the year following their 5th birthday.

The Child handlers must handle a six month or older Jack Russell Terrier.

The Youth handler must handle the same adult terrier in all Youth Division classes entered. No puppies please.

Please list class number, child or youth's name, birthday and Dog's name.

Entry Fee \$5.00 per class

No increase of fees for post-entries in Child/Youth Division.

SATURDAY

Class #	Child's Name	Age	Birthday	Dog's Name

Sunday's Child & Youth Division Entry Form

All Exhibitors must be current JRTCA Members

Child Handlers 5-9 years of age
Youth Handlers 10-16 years of age

A child/youth exhibitors age is determined as of January 1st Of the current year, except for those children turning 5 years Of age. They may start competing in Child Handler any time Of the year following their 5th birthday.

The Child handlers must handle a six month or older Jack Russell Terrier.

The Youth handler must handle the same adult terrier in all Youth Division classes entered. No puppies please.

Please list class number, child or youth's name, birthday and Dog's name.

Entry Fee \$5.00 per class

No increase of fees for post-entries in Child/Youth Division.

SUNDAY

Class #	Child's Name	Age	Birthday	Dog's Name

Thaw Your Paws II ~~~~2020 SUNDAY

January 19, 2020 Sunshine State Jack Russell Terrier Club
Black Prong Equestrian Center, Bronson, FL 32621

Check #. Total \$

SSJRTC Members Pre-Entry Fee: \$10.00 per class
Non-members Pre-Entry Fee \$12.00 per class
Post-Entry Fee: \$15.00 per class

Owners Name:

Address:

City: St: Zip:

Phone: _____
E-Mail: _____

NO POST-ENTRIES FOR RACING

JRTCA Administration Fee: \$2.00 per dog or pup

OR \$7.00 total per dog if not registered or recorded.

**All Entries Post-Marked after Wednesday Jan. 8th, 2020.
may be considered post entries.**

JRTCA 2019/2020 Membership Number: _____ -enclose copy

Remember to renew for 2020

Make Checks Payable to: SSJRTC

Send Completed Entry Form to: Judy Tyno
4160 Sapps Lake Rd.
Enigma, GA 31749
229-326-6288
96piccadillyrt@gmail.com

**Include a Copy of 2020 JRTCA Membership Card
with your entries**

INCLUDE ALL TRIAL CERTIFICATES REQUIRED

Register or record your terrier to avoid \$5.00 fee
Please -No phone-fax-email entries. No open checks

[illegible]

Total Entry Fees:

JRTCA Adm Fee \$2 per dog

OR Non- req/rec Fee \$7 per dog total

Conformation Parking (\$10/day)

Child/Youth Entry Fee:

Sponsorship: Class#

Membership

Signature _____ Date: _____ CAMPING? YES _____ NO _____

CAMPING? _____ YES _____

Date:

Total Amount Enclosed

The Jack Russell Terrier Club of America, Inc.

P.O. Box 4527 • Lutherville, MD 21094 • Phone (410) 561-3655 • FAX (410) 421-7081

APPLICATION FOR MEMBERSHIP



Dues:

- Adult members must be 18 years of age; youth members must be 10 years up to 18 years. Individual youth memberships offer limited club privileges, including True Grit subscription, eligibility for terrier registration and certificates; no voting privileges. A Family Youth membership does not include True Grit.
- All memberships run yearly from January 1 to December 31 with membership fees due each year. Applications for new memberships received during the last two months of the year (November through December) will automatically be carried over to the following calendar year.
- ☐ \$55 Single Adult
- ☐ \$60 Family (2 adults, same address) Also includes minor children under 18 years
- ☐ \$25 Youth (10 up to 18 years) Date of Birth: _____
- ☐ \$15 Family Youth (10 up to 18 years) (resident with adult member) Date of Birth: _____
- ☐ Outside U.S. add \$20 — payment must be by credit card
- ☐ \$14 for 1st Class mailing of True Grit (additional postage fee to get your True Grit faster.)

IMPORTANT: APPLICATION MUST BE SIGNED TO BE PROCESSED

PLEASE TYPE OR PRINT CLEARLY

Name: _____

If Youth Member, Age of Youth: _____ (10 up to 18 years only)

Street: _____

City: _____ State: _____ Zip: _____

Telephone Number: A/C: _____

E Mail Address: _____ Fax #: _____

Have you been a member previously? Yes ☐ No ☐

Address Change? Yes ☐ No ☐ How many dogs do you own? _____

Are you a breeder? Yes ☐ No ☐ Number of minor children: _____

Do you belong to any other Jack Russell Terrier organizations? Yes ☐ No ☐

If yes, which one(s)? _____

Would you like an application to register your kennel name? Yes ☐ No ☐

PLEASE ENCLOSE A CHECK OR MONEY ORDER WITH SIGNED MEMBERSHIP APPLICATION OR COMPLETE CREDIT CARD INFORMATION BELOW.

Please charge to my: Mastercard ☐ Visa ☐ Expiration Date: _____

Credit Card #: _____

Name on card: _____

DON'T FORGET TO SIGN APPLICATION!

Persons applying for membership in the JRTCA, or renewing a current membership, must not be a member of a conflicting JRT organization as defined by the JRTCA, and must not register their JRTs with any conflicting organization or any all-breed kennel club. Conflicting organizations include any organization promoting kennel club recognition/registration of the JRT. In accordance with the Bylaws and regulations of the JRTCA, membership may be terminated, suspended or refused by the JRTCA Board of Directors for any conduct which may be considered likely to prejudice or damage the image of or interfere with the efficient running of the Club, or compromise the breed in any way.

I hereby apply for membership in the JRTCA as indicated above. I agree to abide by the objectives and purposes stated in the JRTCA Constitution and Bylaws, JRTCA rules and operational policies, and the JRTCA Breeders Code of Ethics. I certify that I do not belong to a conflicting JRT organization, nor do I register my Jack Russell Terriers (or any variant thereof) with any all-breed kennel club or conflicting registry. Furthermore, by my signature on this application, I hereby agree that all terms of the Membership Application and any disputes which may arise by and between the JRTCA and me shall be construed and enforced in accordance with, and the rights of the parties shall be governed by, the laws of the State of Maryland, as if all parties have signed in the state of Maryland. Furthermore, I consent to the jurisdiction of, and agree that the sole venue which is proper for the resolutions of any and all disputes between the JRTCA and me is the Circuit Court for Baltimore County in the State of Maryland.

If applying for joint or family membership one adult signature will indicate all adults and family members living at the same address agree to the terms and conditions above.

Date: _____

Date: _____

***** Note: Membership Fees are Non-Refundable. *****

IMPORTANT

The JRTCA is adamantly opposed to recognition/registration of the Jack Russell Terrier by ANY all-breed kennel club, as it is believed to be detrimental to the preservation of the working Jack Russell Terrier. In keeping with this policy, JRTCA membership is limited to individuals who support the JRTCA's principles. Registration of Jack Russell Terriers (or any variant thereof) with any all-breed kennel club, or membership in any organization that supports all-breed kennel club recognition/registration, is not acceptable for application to membership in the JRTCA.

The Jack Russell Terrier is a unique working terrier that has remained virtually unchanged for more than 100 years because it has been preserved for work. It is an unspoiled type or strain of working terrier with unique character, working ability, great intelligence, sound physical structure, and broad structural differences within the standard. These characteristics must be maintained to preserve this terrier as it remains today. The JRTCA's unique registry, with its strict inbreeding limitations and health requirements, breed standard, Breeders' Code of Ethics, and working certificate, sanctioned judge and field trial programs are all designed to do just that. All those who support the JRTCA's principles are welcome and encouraged to join the JRTCA and help us preserve this great little terrier.

SSS